

# PRODUCT INFORMATION PACKET

Model No: 215TTDW16073

Catalog No: U431A-P

10 HP General Purpose Motor, 3 phase, 1800 RPM, 230/460 V, 215T Frame, ODP  
Three Phase ODP Motors



Regal and Marathon are trademarks of Regal Beloit Corporation or one of its affiliated companies.  
©2020 Regal Beloit Corporation, All Rights Reserved. MC017097E

REGAL

### Nameplate Specifications

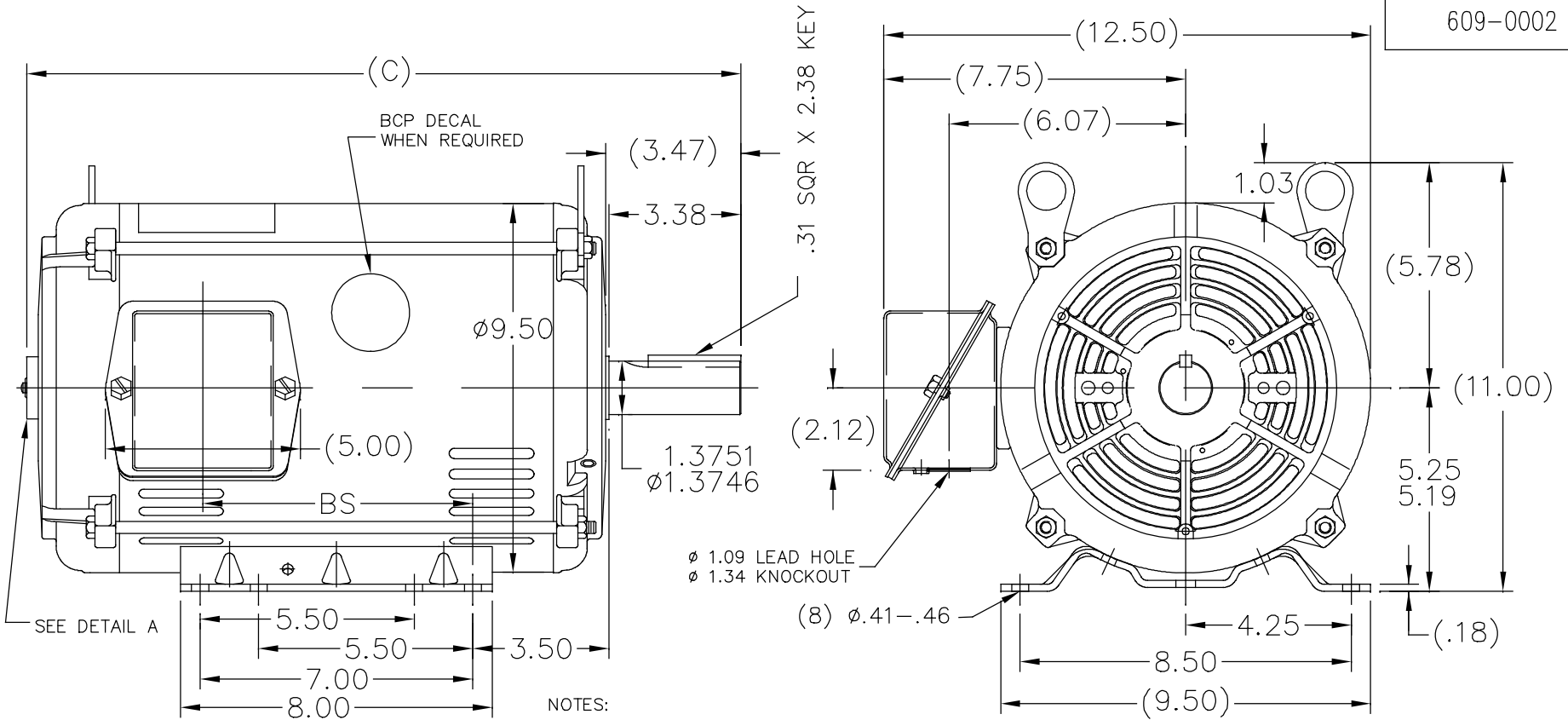
Output HP	10 Hp	Output KW	7.5 kW
Frequency	60 Hz	Voltage	230/460 V
Current	25.0/12.5 A	Speed	1760 rpm
Service Factor	1.15	Phase	3
Efficiency	91.7 %	Power Factor	81
Duty	Continuous	Insulation Class	F
Design Code	B	KVA Code	G
Frame	215T	Enclosure	Drip Proof
Thermal Protection	No	Ambient Temperature	40 °C
Drive End Bearing Size	307	Opp Drive End Bearing Size	206
UL	Recognized	CSA	Y
CE	Y	IP Code	22

### Technical Specifications

Electrical Type	Squirrel Cage Inverter Rated	Starting Method	Line Or Inverter
Poles	4	Rotation	Reversible
Resistance Main	.91 Ohms	Mounting	Rigid base
Motor Orientation	Horizontal	Drive End Bearing	Ball
Opp Drive End Bearing	Ball	Frame Material	Rolled Steel
Shaft Type	T	Overall Length	22.15 in
Shaft Diameter	1.375 in	Shaft Extension	3.38 in
Assembly/Box Mounting	F1/F2 CAPABLE		
Connection Drawing	A-EE7308	Outline Drawing	609-0002-1240

This is an uncontrolled document once printed or downloaded and is subject to change without notice. Date Created:27/03/2020

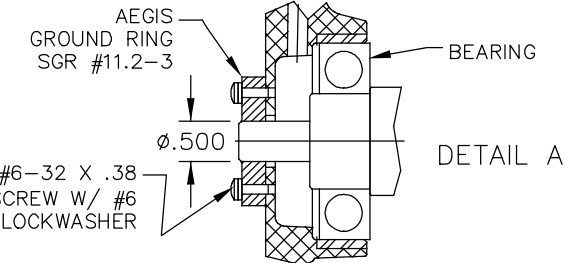
609-0002



Ø 1.09 LEAD HOLE  
Ø 1.34 KNOCKOUT

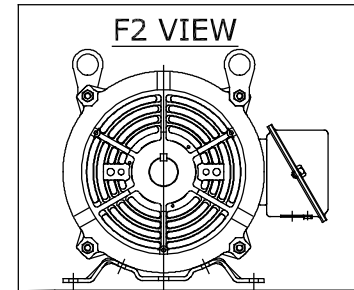
NOTES:

1. NAMEPLATE TO BE READ FROM C'BOX SIDE OF MOTOR.
2. BOX CAN BE MOUNTED IN 90° STEPS.
3. BOX CAN BE MOUNTED ON OPPOSITE SIDE BY REMOVING BRACKETS AND TURNING FRAME 180°. (EXCEPT AS NOTED.)



GROUND RING SCREWS ARE MOUNTED IN HORIZONTAL POSITION.

DASH	FR.	C	BS	MOUNTING
965	213T	16.75	5.43	
1115	213/15T	18.25	6.93	
1240	213/15T	19.50	8.18	F1 ONLY
1545	215T	22.88	11.23	F1 ONLY



TOLERANCES UNLESS SPECIFIED	
DEC.	INCHES
.X	±.1



Regal Beloit America, Inc.

DRAWN LST 6/27/13

CHK

APPD

SCALE 1=4

REF

FMF

PREV

NO.	REVISION	BY & DATE	CHK	ANG	FINISH
C	F2 VIEW ADDED	NK 07/03/18	GNK	.XX	±.03
B	TITLE BLOCK LOGO CHANGE PER ECO-0078542	MDV 06-09-15	MDV	.XXX	±.005
A	LEAD HOLE & KNOCKOUT ADDED PER ECO-0059319	UD 09-03-14	ST	.XXXX	±.0005

TITLE OUTLINE  
210T FR. - BB - TS - DR.PR.

MAT'L.

THIS DRAWING IN DESIGN AND DETAIL IS OUR PROPERTY AND MUST NOT BE USED EXCEPT IN CONNECTION WITH OUR WORK ALL RIGHTS OF DESIGN AND INVENTION ARE RESERVED THIS IS AN ELECTRONICALLY GENERATED DOCUMENT - DO NOT SCALE THIS PRINT

RFP  
DIST LB

CAD FILE SS86668

SIZE	DRAWING NO.	PAGE OF	REV.
A	609-0002		C



NO.		REVISION		BY & DATE		TOLERANCES UNLESS SPECIFIED		Regal Beloit America, Inc.	DRAWN RM 11/20/1990	
						DEC.	INCHES		CHK	ML
5	CHG TO REGAL LOGO	SL	09/10/2015	AB		DEC.	INCHES		CHK	ML 11/21/1990
4	REVISED IEC NOTATIONS	MSG	11/15/2011	CMN	.X		±.1		APPD	SAS 04/24/2003
3	ADDED IEC NOTATIONS... (U1), (V1) ETC. MU95194	MSG	5/10/2010	MJS	.XX		±.02	TITLE CONNECTION DIAGRAM	SCALE	1=1
2	ADDED THE OPTIONAL CORD CONNECTION MU46318	RDH	04/24/2003	DRS	.XXX		±.005	3Ø - DUAL VOLTAGE MOTOR	REF	
1	REDRAWN	RM	11/20/1990		.XXXX		±.0005	MAT'L.	FMF	
				CHK	ANG		±7'30"	FINISH	PREV	
THIS DRAWING IN DESIGN AND DETAIL IS OUR PROPERTY AND MUST NOT BE USED EXCEPT IN CONNECTION WITH OUR WORK ALL RIGHTS OF DESIGN AND INVENTION ARE RESERVED THIS IS AN ELECTRONICALLY GENERATED DOCUMENT - DO NOT SCALE THIS PRINT						RFP		CAD FILE ee7308	SIZE	DRAWING NO. PAGE OF REV.
						DIST	WP		A	EE7308 5

**CERTIFICATION DATA SHEET**

**Model#:** 215TTDW16073 AA      **WINDING#:** K2154306 NONE 1  
**CONN. DIAGRAM:** A-EE7308      **ASSEMBLY:** F1/F2 CAPABLE  
**OUTLINE:** 609-0002-1240

**TYPICAL MOTOR PERFORMANCE DATA**

HP	KW	SYNC. RPM	F.L. RPM	FRAME	ENCLOSURE	KVA CODE	DESIGN
10&7 1/2	7.50&5.60	1800	1760&1465	215T	DP	G	B

PH	Hz	VOLTS	FL AMPS	START TYPE	DUTY	INSL	S.F	AMB°C	ELEVATION
3	60/50	230/460#190/ 380	25/12.5&23.2/ 11.6	LINE OR INVERTER	CONTINUOU S	F4	1.15/1.15	40	3300

FULL LOAD EFF: 91.7&91	3/4 LOAD EFF: 92.4	1/2 LOAD EFF: 92.4	GTD. EFF	ELEC. TYPE	NO LOAD AMPS
FULL LOAD PF: 81&80	3/4 LOAD PF: 77	1/2 LOAD PF: 67	90.2	SQ CAGE INV RATED	10 / 5

F.L. TORQUE	LOCKED ROTOR AMPS	L.R. TORQUE	B.D. TORQUE	F.L. RISE°C
29.8 LB-FT	152 / 76	63 LB-FT 211	81 LB-FT 272	38

SOUND PRESSURE @ 3 FT.	SOUND POWER	ROTOR WK^2	MAX. WK^2	SAFE STALL TIME	STARTS /HOUR	APPROX. MOTOR WGT
66 dBA	76 dBA	1 LB-FT^2	60 LB-FT^2	20 SEC.	2	155 LBS.

**\*\*\* SUPPLEMENTAL INFORMATION \*\*\***

DE BRACKET TYPE	ODE BRACKET TYPE	MOUNT TYPE	ORIENTATION	SEVERE DUTY	HAZARDOUS LOCATION	DRIP COVER	SCREENS	PAINT
STANDARD	STANDARD	RIGID	HORIZONTAL	FALSE	NONE	FALSE	NONE	BLUE (ENAMEL)

BEARINGS		GREASE	SHAFT TYPE	SPECIAL DE	SPECIAL ODE	SHAFT MATERIAL	FRAME MATERIAL
DE	OPE	POLYREX EM	T	NONE	NONE	AISI 1045 (C-240)	ROLLED STEEL
BALL	BALL						
307	206						

THERMO-PROTECTORS				THERMISTORS	CONTROL	SPACE /n HEATERS
THERMOSTATS	PROTECTORS	WDG RTDs	BRG RTDs	NONE	FALSE	NONE VOLTS
NONE	NOT	NONE	NONE			

If Inverter equals NONE, contact factory for further information

INVERTER TORQUE: VARIABLE 10:1
INV. HP SPEED RANGE: NONE
ENCODER: NONE
NONE NONE
NONE NONE PPR
BRAKE: NONE NONE
NONE P/N NONE
NONE NONE
NONE FT-LB NONE V NONE Hz

\*  
N  
O  
T  
E  
S  
\*

DATE: 06/22/2017 07:24:45 AM  
 FORM 3531 REV.3 02/07/99  
 \*\* Subject to change without notice.

